

TRAVEL SNAP CARDS

DISCOS AND NIGHTCLUBS



Like many aspects of travel photography, you have to be talented at multiple genres of photography. If a cruise line hires you to provide coverage... part of that coverage will include their discos and nightclubs. These venues provide some unique problems for the travel photographer.

PRINT SIZE: A5
14cm x 21cm /
5.83" x 8.27"

QUICK GUIDE: GEAR

ISO

800 to 3200



Large Sensor
Camera (If possible)



Fast Lenses:
f/2.8 or faster



External Flash
(If possible)



Wide range lenses:
14mm to 85mm



PRO TIP! SETTINGS

A / Av Use Aperture Priority Mode and the largest aperture

ISO 800 – 3200 (take some test shots first)



1/8th to 1/200th.
Slower shutter speeds = blurring effects.
Faster shutter speed= keeps everything sharp.



Use the High Speed Burst Mode and Continuous Focusing.

WORKING WITH LIGHTS



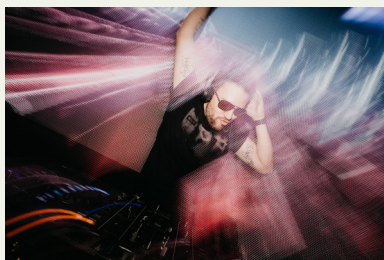
The lighting often changes from white light to colored light. Colored light is great for mood, but be sure to cover yourself by getting some white light shots as well. If

they are using strobe lighting make sure you're using the burst mode. Take special care with red light, as it often doesn't capture well in digital. Use the camera raw setting- even with a smartphone for maximum editing potential.

WORKING WITH AN EXTERNAL FLASH



Many discos and nightclubs have mirrored walls to add to the dramatic lighting. You can use these mirrors for creative effect. However, you must also keep an eye on them for unwanted electronic flash reflections or similar unwanted details like restroom signs etc.



An effective technique that you can use with your electronic flash is known as a "Shutter Drag". This technique creates movement and energy by combining a slow shutter speed with the motion stopping burst of an electronic flash. If your flash has rear curtain sync this will also vary the effect.